



Innovation is our Attitude

www.everestcomposites.in



- FRP/GRP : ROOFING & CLADDING SHEETS & MOULDED PRODUCTS
- PREFAB/PUF PANEL : PREFAB WORKMEN COLONY & STRUCTURES
- GRC : ARCHITECTURAL EXTERIOR CLADDING
- POLYCARBONATE : SKYLIGHT AND VENTILATING SYSTEM

**CONTINUES
LAMINATING
MACHINE
(CLM)**

FRP/GRP PANEL PRODUCTION LINE WITH AUTOMATIC GEL COATING

COMPOSITE

IDEAS

FOR INDUSTRIAL SKYLIGHTS
CHEMICAL RESISTANCE
ROOFING, CLADDING PANELS,
PUF PANEL MODULAR SOLUTION

**More than 500
Corporate Clients**

**Vast Experience
in Business**

Best Value Products

Reliable & Secure

Eco Friendly

LEADING FROM THE FRONT

Everest Composites Pvt. Ltd. (ECPL) is involved in the manufacturing of building construction products since 1991. ECPL is known for its strong technological capability, scalability and adaptability that are required to meet the constantly changing prerequisites of client.

Leveraging its industry expertise, stringent standards and driven workforce, ECPL delivers unmatched services & quality products. This has made Everest Composites innovative pioneer and leader in the industry.

VISION Continued Competency

To establish ECPL as a leading & world-class manufacturer & supplier of innovative, cost-effective, high-quality products through continued technological innovation and competent manufacturing strategies.

MISSION Innovative and Reliable

To deliver greater value, reliability, exceptional quality and economical solutions through consistent innovation & become a market leader in composite materials.

QUALITY You Can Trust

Our customer-centric performance driven & growth oriented quality management techniques extend beyond the range of products to encompass a broader spectrum of services.

**1991
TO
1995**

- 1991 Established by manufacturing FRP/GRP corrugated sheet.
- 1992 Started selling products to the medium scale Industries
- 1993 Started the production of FRP/GRP plain sheet & expanded the network in Gujarat.
- 1995 Started the production of FRP/GRP door & frame, single piece dome industrial products

**1996
TO
2000**

- 1996 Started to take turnkey job of FRP/GRP Sheet and FRP/GRP Gutters for industrial
- 1998 Started branch office South Gujarat and Surat for better services
- 2000 Company acquired land of 30,000 Sq. ft with 6000 St. Ft. Factory at Manjusar.
- Prestigious order from Reliance supplied 10.36 Mtr long sheets.
- Started marketing network for major projects in over all India.

**2001
TO
2004**

- 2001 - 2003 We have supplied approx 20,000 slide (play ground equipment) in entire Gujarat & 75,000 Nos. FRP/GRP Sheet to L&T as replacements of glass.
- 2004 Introduced new product Glass Reinforced Plastic (GRC), we got technical assistance and training from M/s. Saint Gobain Vetrotex Ltd.
- Entered into real estate Business Under name "SUN CITY". They started a prestigious housing complex at Manjalpur Vadodara

**2005
TO
2010**

- 2007 an ISO 9001:2000 Certify
- 2007 Started manufacturing Poly Urethane Foam (PUF) First order BTS unit FRP/PPGI PUF panel for telecom
- 2008 Started the production of FRP plain sheet.
- 2009 Established Unit-2 with various products at - Lamdapura.
- 2010 Converted manual Process to machinery process for GRC by Purchase Machine from Singapore

**2011
TO
2015**

- 2011 We Started Sokhada Unit and Purchased new FRP fully automatic machine CLM
- 2012 Established New Unit and purchased new machines for production capacity at Lamdapura
- 2012 New Product Launched - GRP
- 2013 Successfully completed G+1 Labour Colony at Reliance Industry Ltd. DAHEJ
- 2014 Automatic Spray-Up plant for Mouldings
- 2015 EPS Coated Decorative Mouldings

**2016
TO
2020**

- 2016 Expansion Plan for Modern Manufacturing Facility

**GROWTH
CONTINUE**

SKYLIGHT ROOFING SYSTEM

EVERLIGHT

MACHINE MAKE FRP/GRP SKY LIGHT PANELS

Everlight skylight is an excellent substitute for conventional cheaper & poor quality FRP/GRP sheets and also for the expensive polycarbonate sheets. Everlight is durable and proves as a "Value For Money" product in the long run.

- ◆ Everlight roofing & side cladding system
- ◆ Available in different shapes, profiles & colours
- ◆ Translucent non-glare and crinkle-diffused sheets
- ◆ Industrial Building & warehouse.
- ◆ Fire Retardant
- ◆ Natural Light - Saves Electricity Cost



Description	Machine Made FRP/GRP Sheet.		
Brand	Everlight / LifeGuard	Resin	RL UV / G.P / Isophthalic / Vinylester / Epoxy / Phenolic
Model	Any type	Fiber Glass	Greater than 30%
Color	As required	Gel Coat	Top side with any resin (Dep. Appl.)
Width	1450mm(Stretch)	Warranty	10-15 years (Dep. Specification & thk)
Length	No restriction		
Thickness	1-6mm	Unit Price	Depends specification and thickness
Unit Weight	Depend on type	MOC	1000 Sq.mtr
Tolerance	+ or - 10%		
Capacity	50,000 Sq.mtr / month		

Physical Properties

Barcol Hardness	Minimum 40	Standard	IS : 12866
Tensile Test	Minimum 7,000 PSI	Standard	ASTM
Flextural Strength Test	Minimum 14,000 PSI	Standard	ASTM
Density	1.4 to 1.6	Standard	IS : 12866
Water Absorption Test	Maximum 0.25%	Standard	IS : 12866
Bolt Shear Test	Minimum 375 N	Standard	IS : 12866
Load Difflection Test	Minimum 1100 N	Standard	IS : 12866

COMPARISON OF MACHINE MAKES FRP/GRP SHEET AND POLYCARBONATE SHEET

Parameter	Machine Make FRP/GRP Sheet	Polycarbonate sheet
Chemical stability	Very high	No stability
Reinforcement	Reinforcement (Glass fibre)	No reinforcement
Mechanical Strength	Very high due to reinforcement	Low
UV	UV material	UV coated

COMPARISON OF MACHINE MAKE FRP/GRP SHEET AND HAND LAY-UP FRP/GRP SHEET

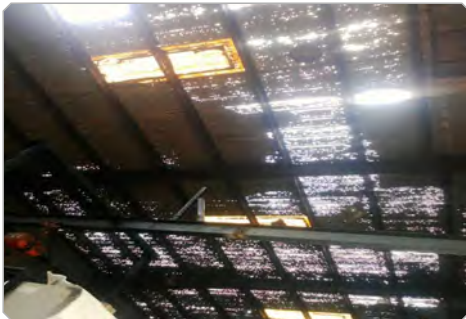
Parameter	Machine Make FRP/GRP Sheet	Hand lay up FRP/GRP sheet
Thickness	Uniform thickness	Thickness variation
Profile	Uniform profile	No uniform profile
Guard Film	Both side cling film	No film
Tensile strength	Min. 7000 PSI	7000 PSI
Flexural Strength	Min. 14000 PSI	Min. 14000 PSI
Glass Content	Min. 30	25-30
Barcol Hardness	40 - 45	Upto 40
Availability	50,000 Sq.mtr / month	350 R.mtr.

Disclaimer : Seller Warrens that all goods & services (products) sold will conform to the specification, prepared, approved & issued by seller, unless otherwise stated & are subject to commercial tolerances expect as provided.

**FRP/GRP
ROOF
SHEETS**

LIFEGUARD

CHEMICAL RESISTANT OPAQUE & TRANSLUCENT FRP/GRP ROOFING & CLADDING SHEETS



OLD CORRODED ROOF (METAL)



FRP/GRP LOUVERS FRONT SIDE



FRP/GRP COOLING TOWER CLADDING

CHEMICAL RESISTANCE FRP/GRP (FIBREGLASS REINFORCED PLASTIC / POLYMER) SHEETS MANUFACTURED BY CLM (CONTINUE LAMINATING MACHINE) AUTOMATIC PLANT

Ideal replacement of Metal, PPGI, Cement Sheet & Galvanize Roofing & Cladding Sheets for chemical resistance applications

WHY CHEMICAL RESISTANCE FRP/GRP SHEET REQUIRED ?

In Industries there are huge losses incurred due to following reasons:

- ✦ Corrosive Chemical Process
- ✦ Coastal Area
- ✦ Spillages of Chemicals on the Roof
- ✦ Due to Corrosive Vapor
- ✦ Due to Weathering like Snowfall / Extreme Rainfall.

TYPE OF RESIN FOR CHEMICAL RESISTANCE FRP/GRP PANEL

- ✦ Using higher grade of Resin like Isophthalic Resin / Vinyl ester Resin.
- ✦ Top side Gel coated having Gelcoat on Vinyl ester Resin / Isophthalic Resin / RL UV with combination of Resin with Vinyl ester / Isophthalic Resin / RL UV.

ADVANTAGES OF CHEMICAL RESISTANCE FRP/GRP SHEET

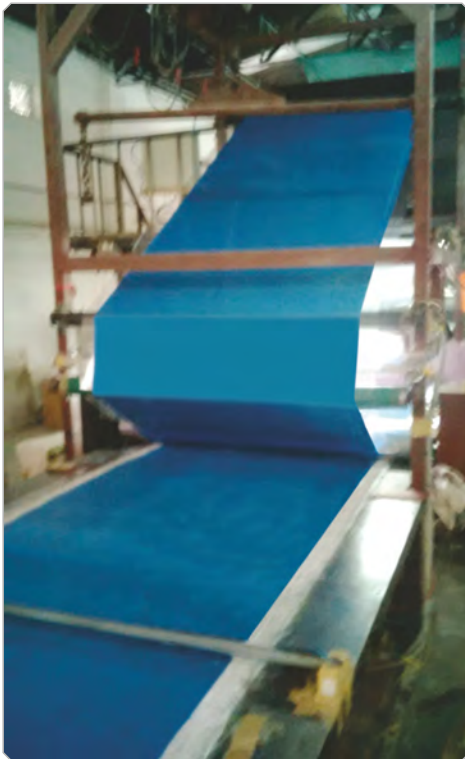
- ✦ Life of EVEREST FRP/GRP chemical grade sheet would be more than 20 years.
- ✦ Warranty of top side Gel Coated EVEREST FRP/GRP sheet is 15 years against any manufacturing defect. Thus Gel coated FRP/GRP sheet life is much higher than the normal FRP/GRP sheet.
- ✦ Excellent Resistance to Moisture, Ultraviolet Rays, Electrical Shock, temperature, water pressure & all chemical effects like Oils, Acids, different types of Fumes etc.
- ✦ Durable, Fire retardant, protection from Corrosion, Leakages, Rust, Rot & prevents Warping.
- ✦ Avoid breakage, shattering and chipping
- ✦ Zero Maintenance, Leak proof
- ✦ Quick & easy installation
- ✦ Easy relocatable
- ✦ It has good thermal/heat insulating property

ROOFING & CLADDING SYSTEM

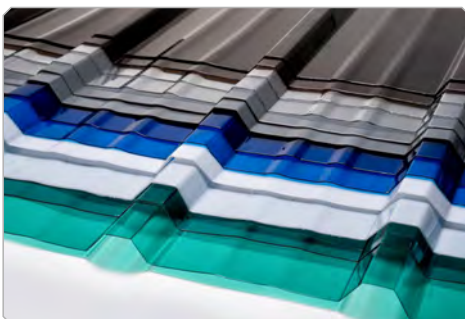
GELCOATED



MACHINE MAKE GEL COATED FRP/GRP OPAQUE / TRANSLUCENT SHEET



TOP SIDE GEL COATING PROCESS IN MACHINE



EVEREST INTRODUCE FIRST TIME IN INDIA - CONTINUES LAMINATING MACHINE (CLM) PLANT WITH TOP SIDE GELCOAT.

"LIFE GUARD" GEL COATED FRP/GRP TRANSLUCENT / OPAQUE ROOFING / CLADDING PANEL.

WHAT IS GEL COAT?

Gel Coat is a Top Coat for regular FRP/GRP panel with high percent UV (Ultra Violet) resistance, High Abrasive Filler and better pigmentation for Opaque panels. Clear Gelcoat for Translucent skylight panel.

WHY GEL COAT REQUIRED?

- ♦ It protect FRP/GRP panel from ABRASION, ERROSION of Surface
- ♦ Resin Evaporation (Fibre Mat shown Phenomenon)
- ♦ Extra UV Protection
- ♦ Enhance life of Product like a Sun Screen Cream on Human Skin
- ♦ LONG WORKING LIFE making itself as Maintenance Free
- ♦ The illumination through the panel will remain uniform for long time

OUR CAPABILITY OF MANUFACTURING TO LEAD THE MARKET.

We offer wide range of Combination of Gel Coat/Top Coat Sheet/Cladding from General Purpose, Roof Light, Isophthalic, Vinyl Ester, Superior Vinyl Ester, Bisphenol - Epoxy Vinyl Ester, etc from normal to high grade engineering Unsaturated Resin with higher percent of UV and Abrasion which LEAD us unmatched among competitors. Machine can produce minimum 2.5 Lac Sq.Mtr. / annum.

APPLICATION OF TOP SIDE GEL COATED PANEL.

- ♦ Petro Chemical
- ♦ Cooling Tower Cladding
- ♦ Hazardous Chemical Industries
- ♦ Salt Plant
- ♦ Snow area
- ♦ Area for roofing
- ♦ Fertilizer Plant
- ♦ Costal Area
- ♦ Effluent Treatment Plant
- ♦ Heavy Rainfall area
- ♦ High Temperature Working

GEL COATED SHEET ARE HAVING HIGHER WARRANTY THEN NORMAL SHEET, WARRANTY IS EXTENDED UP TO 20 YEARS AS PER APPLICATION, IN COMPARISON TO NORMAL SHEET OF 7 TO 10 YEARS.

**ROOFING &
CLADDING
SYSTEM**

ENVIRONMENTAL BENEFITS

ENVIRONMENTAL BENEFITS OF FIBRE REINFORCED PLASTICS (FRP/GRP)

- ✦ LIGHT WEIGHT - REDUCE STRUCTURAL COST
- ✦ ANTI-CORROSION - REDUCE REPLACEMENT & MAINTENANCE COST
- ✦ BETTER INSULATION PROPERTY - REDUCE ELECTRICAL CONSUMPTION FOR COOLING AND HEATING
- ✦ TRANSLUCENT PROPERTY - REDUCE ELECTRICAL CONSUMPTION
- ✦ RECYCLE MATERIAL - FRP CAN BE USED AS STRONG FILLER
- ✦ ELIMINATE 99% OF HARMFUL UV RAYS
- ✦ REDUCE THERMAL RADIATION AND SAVE ENERGY COSTS



FRP COOLING TOWER CLADDING

COMPARATIVE CHEMICAL RESISTANCE CHART

NAME OF THE CHEMICAL	CONC.(%)	1	2	3	4	5	6
Acetic Acid	25	65	66	99	99	90	99
Acetic Acid	50	27	32	82	82	75	82
Acetic Acid	Glacial	NR	NR	NR	NR	-	38
Acetone	10	NR	NR	-	-	-	82
Alum	All Conc.	65	66	99	121	104	121
Ammonium Chloride	All Conc.	77	66	99	99	100	99
Ammonium Hydroxide	5	NR	NR	82	82	82	82
Ammonium Phosphate (Mono / Dibasic)	All Conc.	60	77 / NR	99	99	-	99
Ammonium Sulphate	All Conc.	77	60	99	121	100	121
Benezene	Vapour	NR	32	RT	RT	NR	49
Benezene	100	NR	NR	NR	NR	NR	38
Brine	Saturated	77	66	99	99	104	99
Chromic Acid	10	43	NR	65	65	90	65
Crude Oils	100	77	43	99	121	-	121
Detergents Sulphonated	All	49	NR	99	82	-	82
Detergents Organic	All	38	NR	65	82	-	82
Diesel Fuels	All	77	60	82	99	-	99
Dimethyl Formamide	100	NR	NR	NR	NR	-	NR
Ethyl Acetate	100	NR	NR	NR	NR	NR	21
Ethyl Alcohol	50	43	32	38	38	RT.	65
Ethylene Glycol	All	-	0	99	99	105	99
Fatty Acids	All	77	66	99	121	104	121
Ferric Chloride	All	77	66	99	99	100	99
Fertilisers	-	43	27	65	65	37	65
Fuel Oils	100	65	54	82	99	-	99
Glycerine	100	77	66	99	99	100	99
Hydrochloric Acid	10	71	66	82	110	104	110
Hydrochloric Acid	25	43	-	82	110	80	110
Hydrochloric Acid	37	27	NR	65	82	70	82
Kerosene	-	65	66	82	82	27	82
Methyl Alcohol	100	27	NR	NR	NR	RT	38
Mineral Oils	100	77	66	99	121	-	121
Naphtha	100	49	66	82	99	RT	99
Nitric Acid	5	65	49	65	82	70	82
Nitric Acid	20	49	-	49	49	-	65
Nitric Acid	40	NR	NR	NR	NR	RT	RT
Oxalic Acid	Saturated	77	60	99	99	104	99
Phosphoric Acid	80	65	66	99	99	104	99
Pot. Hydroxide	10	NR	NR	65	65	71	65
Pot. Hydroxide	45	NR	NR	82	82	-	82
Sodium Chloride	All	77	66	99	99	100	99
Sodium Hydroxide	25	NR	NR	82	82	93	65
Sodium Hydroxide	50	NR	NR	99	99	-	82
Sod. Hypochlorite	10	NR	NR	82	82	-	65
Soyabean Oil	All	77	54	99	99	104	99
Sulphuric Acid	Vapour	77	-	99	121	100	177
Sulphuric Acid	5	77	-	99	99	100	99
Sulphuric Acid	25	77	49	99	99	105	99
Sulphuric Acid	50	60	49	65	80	105	82
Sulphuric Acid	70	NR	NR	40	55	70	82
Sulphuric Acid	93	NR	NR	NR	NR	-	NR
Tannic Acid	All	65	66	99	99	104	99
Toluene	100	NR	NR	27	38	NR	49
Vinegar	All	77	66	99	99	-	99
Water (Sea)		77	66	82	99	104	99
Water (Deionised)	All	77	32	82	82	-	82
Water (Distilled)	All	77	60	82	82	95	82
Xylene	All	NR	NR	27	38	NR	49

1 Terephthalic Resin

2 Isophthalic Resin

3 Vinyl Ester Resin

4 Bisphenol Vinyl Ester Resin

5 Bisphenol Fumarate Vinyl Ester Resin

6 Superior Vinyl Ester Resin

(-) : Data not available

NR : Not Recommended

RT : Room Temperature

Disclaimer :

Seller warrants that all goods & services (products) sold will conform to the specification, prepared, approved & issued by seller, unless otherwise stated & are subject to commercial tolerances expect as provided.

Note : Figures shown are the maximum recommended service temperature in Degree °C.

**ROOFING
RAIN WATER
GUTTER
SYSTEM**

EVERLAST

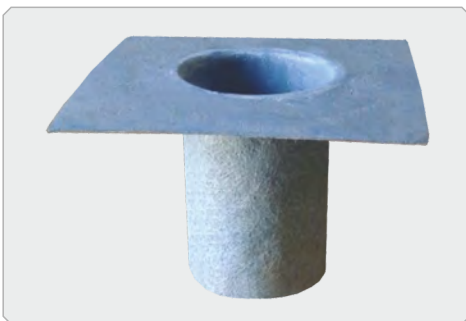
INDUSTRIAL ROOFING RAIN WATER GUTTER SYSTEM



FRP/GRP RAIN WATER GUTTER



FRP/GRP RAIN WATER GUTTER



FRP/GRP DOWNTAKE NOZZLE

CHEMICAL RESISTANCE FRP/GRP (FIBREGLASS REINFORCED PLASTIC / POLYMER) SHEETS MANUFACTURED BY CLM (CONTINUE LAMINATING MACHINE) AUTOMATIC PLANT

Everlast is an excellent substitute for conventional M.S. / G.I. / A.C. / RCC / PCGI Gutter system for Industrial Buildings. Everlast gives perfect weather resistance and Flexibility along with the obstacle free and algae formation free smooth surface top on layer. It is a highly economical gutter system to drain out the rainwater satisfying the norms of civil engineering.

Also available matching accessories in the form of down take nozzle, stop ends, cross-joints, etc. The skilled team of Everest provides the necessary guidelines for the erection at the site and necessary lap joints to make it absolutely leak proof, maintenance free and provides long lasting performance.

COMPOSITE LAYERS

- ♦ It is consisting of a Modified Propylene glycol (MPG) based high built coat that gives it weather resistant, flexible & with smooth surface on top layer
- ♦ Resin rich vein layer that provides extra back up and avoids surface erosion
- ♦ Chopped strand matt reinforcement for mechanical strength
- ♦ Cross-linked Reinforcement to induce the stiffness & sturdiness

FEATURES

- ♦ The unsaturated polyester matrix gives bonding to the reinforcement structure
- ♦ It can be manufactured as per the required girth / circumference and is available in different colour shades matching the colour of roofing sheets and exteriors of the shades
- ♦ Weatherproof, leakproof and corrosion-free
- ♦ It is lightweight and hence saves the structural cost and erection cost of and industrial buildings
- ♦ **Flexibility** : Available in the shapes of Valley, Eaves, Boundary walls and Semi circle pipe. with Monolithic Joints

DEFERENT SHAPES OF GUTTER



VENTILATING SYSTEM

EVERFLOW

TOP VIEW OF ROOF VENTILATOR

FRP/GRP BASE PLATE



Everflow is a ventilating system for natural fresh airflow in the industrial buildings. It is competent & completely leak-proof, maintenance-free, and durable system without using any kind of electrical or mechanical energy. Everflow works on the basic principle that hot air moves upwards. It provides an excellent air circulation through systemized outlet for hot air & inlet of fresh air.

WHAT IS EVEREST TURBOVENT AIR VENTILATOR?

Everest Turbovent is a combination of both natural and forced air ventilation system. It is a free spinning roof ventilator which works on free wind energy.

It functions as a natural ventilator when there is a difference in thermal or wind pressure between the inside and outside of the building which forces the air to move through the opening of the ventilator.

It also acts as a forced ventilation system when the Turbovent rotates to create a negative pressure within the building. Cooler air from outside will rush into the negative space within the building in order to maintain an equilibrium condition.

FEATURES

- ♦ The air circulation is through natural drought.
- ♦ Minimum maintenance.
- ♦ No obstruction for outgoing air.
- ♦ faster air cycle and better ventilation.

SPECIAL FEATURES OF EVEREST TURBOVENT

- ♦ No operating cost as it works on free wind energy
- ♦ Dual benefit of natural ventilation and natural daylight at no cost
- ♦ It is a free spinning ventilator that provides fresh air in your roof space and living area whole year round 24 hours a day at Zero operating cost
- ♦ Light weight, strong and durable construction for resistance against extreme climatic conditions
- ♦ Maintenance free "Fit & Forget"
- ♦ Rigid Spider type frame construction to withstand Cyclone, Storm & Twisters
- ♦ Whisper quiet in operation
- ♦ Easy & Quick installation on any roof profile
- ♦ Aerofoil Blades to prevent water and dust ingress
- ♦ Dynamically Balanced for frictionless rotation also at lowest wind velocity



SALIENT FEATURES OF POLYCARBONATE VENTILATOR BASE PLATE.

- ♦ Available in almost all types of roofing profiles. | High impact strength. | Weather resistant.
- ♦ UV stabilized & Temperature resistant (-40C to +130C). Compared to FRP/GRP, PC base plate have minimal thermal expansion and contraction, which prevents cracks in long run.
- ♦ Light Transmission - PC Base plate stable Transmits light up to 89% for long time.
- ♦ FRP/GRP retain Dust and Become dirty after some time.
- ♦ Available in 21" and 24" Diameter, can be customized as per Requirement.
- ♦ Our expertise in roofing products enables us to design base plate matching with Metal sheet precision, thus eliminating the possibility of leakage.
- ♦ Polycarbonate ventilator base plate help in cutting down electricity charges.
- ♦ In today's context, it is a great saving and also contributing towards saving the environment.
- ♦ We can manufacture bases in any size (upto length 2000mm & width 1220mm)

TYPICAL DATA SHEET

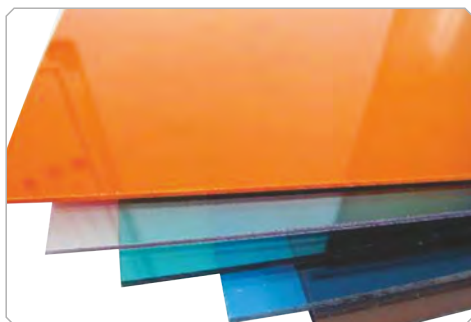
GENERAL PROPERTIES	METHOD	UNITS	VALUE
Density	ISO 1183	g/cm ³	1.2
Light Transmission (Dependinh on thickness)	ASTM D 1003	%	81 - 90
Refractive index	ISO 489		1,585
UV protection layer			40
Machanical			
Tensile Strength at yield	ISO 527-2	Mpa	60
Tensile Modulus	ISO 527-2	Mpa	2300
Elongation at break	ISO 527-2	%	>100
Elongation at yield		%	6
Flexural Modulus	ISO 178	Mpa	2330
Charpy Un-notched	ISO 179	kJ/m ²	Not Break
Izod Impact notched	ISO 180a	kJ/m ²	>65
Thermal			
Temp of deflection (HDT) Under load of 1.8MPa	ISO 75-1	Degree C	130
Vicat softening temp (50 Degree C/h 50N)	ISO 306	Degree C	133
Thermal conductivity	DIN 52612	W/m x Degree C	0.3
Coefficient of linear thermal expansion 0-50 Degree C	ISO 11359	mm/(m x 1/ Degree C)	0.07
GWFI (Glow-Wire Flammability Index)	IEC60695-2	Degree C	900
Electrical			
Volume Resistivity	IES 60093		3 x 10 ¹⁴
Surface Resistivity, dry	IEC 60093		6 x 10 ¹⁵
Dissipation Factor 1Mhz	IEC 60250		0.009
Dissipation Factor 100Hz	IEC 60250		0.0006

Disclaimer : Seller Warrens that all goods & services (products) sold will conform to the specification, prepared, approved & issued by seller, unless otherwise stated & are subject to commercial tolerances expect as provided.

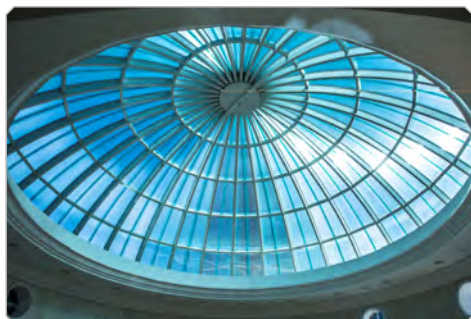
**SKYLIGHT
DOMES**

POLYCARBONATE SHEET

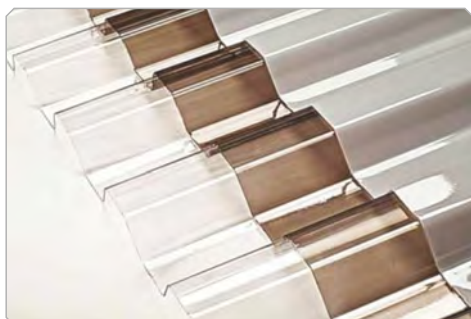
POLYCARBONATE SOLID SHEET / MULTI WALL



FLAT SOLID SHEET / MULTIPLE WALL



POLYCARBONATE SHEET DOM



CORRUGATED SHEET

We are leading distributor of Polycarbonate Sheet, Polycarbonate Corrugated Sheets, Polycarbonate Ventilator Base Plates, Polycarbonate Thermoforming Articles, etc. in India. The Brand not only indulge in making quality products but also creating innovative benchmarks. We manufacture Base plate to match all roofing profiles available and further, we can customize to any customer's specification. Our expertise in mould design, mould re-design, mould fabrication give us un-matching speed to serve our customers requirements.

POLYCARBONATE SOLID SHEET

COLORS*

Transparent : Clear, Solar Grey, Bronze, Red, Blue, Green, Smart Blue, Smart Green, Bluish Breeze.

Translucent : Yellow, White Opal, White Diffuser, Mint Green, Solar Control, Solar Olympic, Solar Ice, Red.

Opaque : Dark Green, Red Brick, Black, Dark Blue, Cream, Light Grey, Dark Grey, Off White, Brown

Surface : Smooth, Embossed, Prismatic, Crystal

DIMENSIONS*

Width: 1220 - 2150mm | **Length:** 30500-61000mm | **Thickness*:** 1-12mm

* Additional options are available upon request.

POLYCARBONATE CORRUGATED SHEET

COLORS*

Transparent : Clear, Solar Grey, Bronze, Sky Blue, Transparent Green, Smart Grey.

Translucent : White Opal, Diffuser, Solar Control, Solar Ice, Mist Green, Smooth Cream

Opaque : White, Green, Blue, Red Brick

Surface : Smooth, Embossed, Prismatic, Crystal

DIMENSIONS*

Width: 660 - 1870mm (By Profile) | **Length:** 1500-6500mm (By Profile)

* Additional options are available upon request.

**PREFAB /
PUF
PANEL**

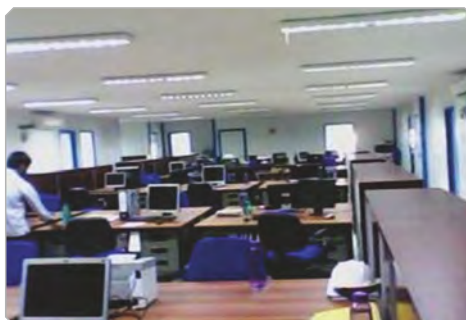
EVERCOOL

MODULAR PANELS, PARTITION & M.S. STRUCTURES

INFRASTRUCTURE APPLICATION : Evercool Composites Modular Portable & Dismantle Type PUF insulated panel structural products are made from premium grade of raw materials procured from renowned manufacturers. Products are designed to give superior level of interior & exterior aesthetics.



AESTHETIC APPEARANCE



PROVIDES EFFICIENT ATMOSPHERE



QUICK MOBILITY



DISMANTLE / KNOCKDOWN OFFICE



WORKMEN COLONY (CAMP)



SECURITY CABINS

COLD CHAIN APPLICATION



COLD ROOM



COLD CHAIN VEHICLE



COLD STORAGE



PUF INSULATED PANEL ROOFING AND SIDE CLADDING



TOILET BLOCK



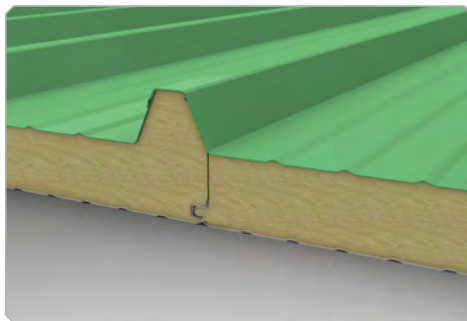
TWIN TOILET BLOCK



CUSTOMIZED KNOCK DOWN DESIGNS



PORTABLE SHELTER



PUF INSULATED SANDWICHED PANEL



FARM HOUSE (MODEL)

ADVANTAGES OF EVERCOOL COMPOSITES PUF INSULATED PRODUCTS.

- ♦ Superior thermal & acoustic insulation
- ♦ Temperature range : -80 Deg. °C to +100 Deg. °C
- ♦ Density : 40kgs + 2 kgs / Sq.Cm
- ♦ Speedy & easy installation at site
- ♦ Dismantle / Detachable & knockdown designed
- ♦ Save cost, time and space
- ♦ Sturdy & Strong construction
- ♦ Terminate free & leak proof
- ♦ Provides efficient work atmosphere
- ♦ Reduces steel frame work and load bearing foundations
- ♦ Provides flexibility in customize design



NO CRACKING



EASY INSTALL



INSULATION+



ECO FRIENDLY



TERMITE FREE



BORER FREE



WATER PROOF

**PRE
PAINTED
GALVANIZE
IRON**

PPGISHEET

PPGI/PRE-COATED METAL ROOFING & CLADDING SHEETS



ARBS PROFILE SHEET

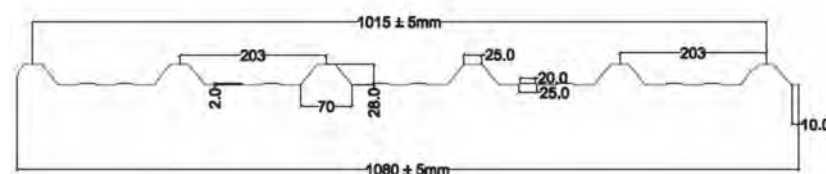
ARBS PROFILE SHEET is a trapezoidal ribbed colour coated/PPGI/PPGL steel profile sheet widely used for roofing & cladding purpose in industries, airports, railway stations, showrooms, ware houses, cold storages, stands, malls, stadiums, houses and real estates, its high strength and supreme paint quality enhances the longevity of sheet unbelievably, ARBS PROFILE SHEET is available in pre-painted galvanised (PPGI), Prepainted galvalume (PPGL) & bare galvalume (GL) form.

SPECIFICATION

Covered width 1020 mm
Supply width 1100 mm
Pitch 255 mm
Thickness 0.30 mm - 0.80 mm

Crest width 26 mm / 82 mm
 (upper / lower)
Crest height 29 mm
Lip Length 10 mm
 upto 12 mtrs.

ADOPTED FROM ADVANCE NEW METAL SHEET



CRIMP

AVAILABLE FINISH

Al-Zn alloy coated steel (Bare Galvalume)
 Pre-painted Al-Zn alloy coated steel (P.P.G.L.)
 Pre-Painted Galvanised Iron (P.P.G.I.)

AVAILABLE LENGTH

Custom made requirement up to a
 Max. of 10 mtrs.

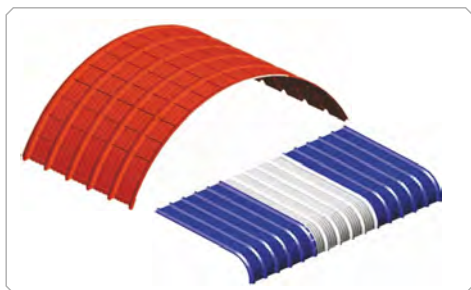
APPLICATION

Roof for Industrial, commercial &
 residential buildings.

CRIMP CURVE

Crimp Curve Eaves curve & suitable roof
 semi circle curve.

Custom made requirement up to Max. of 7
 mtrs.



PPGI SHEET / PRE COATED ROOFING & CLADDING SHEET

**GLASSFIBRE
REINFORCED
CONCRETE**

EVERESTGRC

- ARCHES
- COLUMNS & CAPITALS
- CORNICES
- BRACKETS
- DECORATIVE MURALS
- PLANTERS
- BANDS & CARVED PANELS
- FINS
- LANDSCAPES
- BALUSTERS & RAILINGS
- MOULDINGS
- SCREENS

GRC ARCHITECTURAL EXTERIOR CLADDING

Glassfibre Reinforced Concrete (GRC) is one of the most versatile building materials available to architects & engineers.



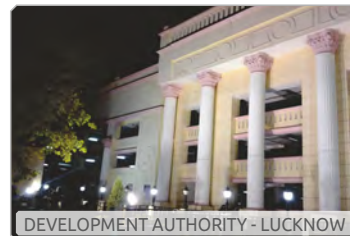
TALASAN - AMBAJI



RAJHANS - FERADIO - SURAT



BAPS - AHMEDABAD



DEVELOPMENT AUTHORITY - LUCKNOW



PRIVATE BUNGALOW - ANAND



SHINE PLAZA - VADODARA



EAGLE HOUSE - RAJKOT



CENTRAL BUS STOP - VADODARA

GRC INTRODUCTION

• Glassfibre Reinforced Concrete (GRC) is one of the most versatile building materials available to architects & engineers. • Developed in the twentieth century, GRC has been making a significant contribution to the economics, technology and aesthetics of modern construction worldwide for over 40 years. • Glass Fibre Reinforced Concrete is a composite material made of cement, aggregates, water, chemical admixtures and alkali resistant (AR) glass fibres, which can be engineered to suit a wide range of applications. • GRC is very versatile and can be suitably moulded into wide variety of complex shapes and profiles. • GRC is also most suitable for seismic regions as GRC has a tendency to bend and not crack under seismic pressure. • The design and manufacture of can products is covered by international standards, which have been developed in Europe, America, Asia and Australia. GRC is manufactured in over 100 countries.

GRC - CONSTRUCTION INDUSTRY

ADVANTAGES

Light Weight

High Strength

High Impact Resistance

Durable

Choice of Colour / Texture

No steel reinforcement

No Health Risk

Easy Fixing

BENEFITS

Faster installation.

Significant savings in superstructure & foundations

Allows greater lengths, reduced number of supports and thin sections Hard and dense surface offers resistance to graffiti

Minimizes breakages during transportation and erection.

Needs low maintenance Never rots or corrodes

Various surface finish and shades such as plain or sand stone, striped granite, oak finish, stonewall and acid wash can be obtained.

So, no electromagnetic interference with signaling cables

AR glass fibre is irrespirable unlike asbestos fibre

Avoids all problems of wet fixed cladding.

Can be drying fixed with stainless steel / M.S. fixtures.

KEY FEATURES

- **GRC** products are easy to handle & last to erect.
- **GRC** is easily molded to reproduce shapes, details and textures
- **GRC** can be cast into fine details design in thin cladding elements
- **GRC** can be coloured with pigments, paints and natural stone facings
- **GRC** offers designers unrivaled flexibility
- **GRC** does not suffer from corrosion & environmentally friendly
- **GRC** is durable against extreme weather conditions
- **GRC** offers a wide variety of shapes and surface finishes

FRP/GRP → PREFAB/PUF PANEL GRC → APPLICATIONS ARE FOR BELOW SEGMENTS



PHARMA



WATER



POWER



GAS OIL



MUNICIPAL



PAPER



PETROL



CHEMICAL



MARINE



COMMERCIAL HUB



STEEL



HOTEL RESORTS



AIR



ROAD & BUILDINGS



EDUCATIONAL



RESIDENTIAL



GOVERNMENT INFR.



GAS



AUTO MOBILE



AGRICULTURE



Innovation is our Attitude

www.everestcomposites.in

EVEREST COMPOSITES PVT. LTD.

Unit 1 : (FRP/GRP DIVISION)

Everest Compound, Haridham Sokhda Road, Beside Telephone Exchange,
At & Post : Sokhda, Vil. : Sokhda, Dist. : Vadodara - 391 745, Gujarat-India.
+91 265 2886 004 | +91 987 954 2289 | enquiry@everestfibre.com

REGD. OFFICE / FACTORY

Unit 2 : (GRC & PREFAB / PUF PANEL DIVISION)

Opp. Lamdapura Bus Stop, At & Post : Lamdapura, Ta. : Savli,
Dist. : Vadodara - 391 775, Gujarat-India.
+91 2667 262 011 | +91 997 899 2929 | enquiry@everestfibre.com